



# SIEMENS

Building Technologies



## CCTV

SISTORE MX –  
the hybrid, digital  
video surveillance system

# Surveillance in a new dimension

SISTORE MX is a hybrid, digital surveillance and image recording system that can be used in a multitude of application areas. From shopping centres, to offices or large-scale industrial facilities, the system is designed for all applications. This unique system crosses the boundaries, offering connections to both analogue and IP digital cameras to be recorded. Due to the integration of a pixel-based motion detection system, surveillance is possible both in- and outdoors. In case of alarm, remote dialup over a network displays images to the operator or control room, additional notification by e-mail or SMS is also possible.



## Highlights

- Hybrid digital video recording system:
  - up to 32 analogue video cameras & 16 IP cameras can be connected - total 48 cameras!
- Recording speed of up to 200 ips
- Up to 4 analogue monitors can be connected with video matrix function
- Transmission via LAN / xDSL / ISDN possible
- Integration with other systems, e. g. SiPass access control or IVM video software
- Integrated control of PTZ and dome cameras
- Support of 3rd party IP cameras, including PTZ control
- Full pentaplex operation
- Temperature management
- Integrated sabotage protection
- "Kalagate" security authenticity certification

# The innovative features of SISTORE MX

- **Hybrid digital video recording system - up to 32 analogue cameras & 16 IP cameras can be connected - total 48 cameras!**

With 6 models available, up to 32 standard analogue cameras, plus 16 ethernet-based IP cameras can be connected for a maximum system size of 48 cameras.

- **Connection of up to 4 analogue monitors with matrix function (switching video inputs to monitors, automatic switching in case of alarm)**

With the 4 analogue outputs, following alarms, fixed camera observation or auto-switching of live cameras is possible.

- **Easy and fast transmission via LAN / xDSL and ISDN**

The live cameras and recorded images may be transmitted to a remote operating station via an existing LAN, a xDSL connection or an ISDN connection.

- **Possibility to connect to an integrated video management system or to an access control system**

It is possible to connect SISTORE MX to Siemens' IVM interactive video software or to the SiPass access control system via an integrated interface, allowing direct control of SISTORE MX.

- **PTZ control for dome cameras and pan/tilt devices**

Both speed domes and pan/tilt/zoom cameras, can be controlled via the on-screen interface of SISTORE MX, with the possibility of setting and recalling up to 4 preset positions.

- **Support of 3rd party IP cameras, including PTZ control**

SISTORE MX can also connect to existing 3rd party IP cameras and if these are functional cameras, supports PTZ control.

- **Full pentaplex operation**

SISTORE MX is a "pentaplex" system – one which enables the user to simultaneously continue to record, watch a live multi-screen picture display whilst playing back previously recorded video scenes on the same monitor and remote viewing over a network or dialup connection.

- **Sabotage protection**

This hybrid recording system is equipped with integrated sabotage protection, recognising camera re-positioning, covering/screening, spraying and defocusing. The integrated temperature management reduces maintenance time and cost, ensuring true system protection.

- **"Kalagate" security authenticity certification**

SISTORE MX is "certified" by the Kalagate Imagery Bureau. Based in England, Kalagate independently certifies digital equipment verifying that the captured and stored images are admissible as evidence in criminal and civil judicial courts of law.



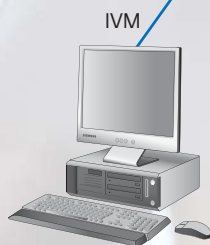
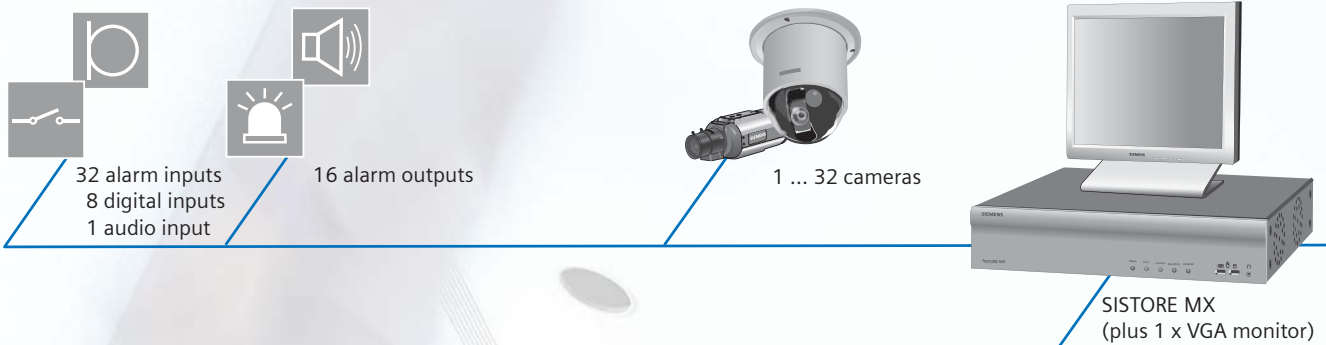
The SISTORE MX can be connected to SiPass access control system to allow quick and easy searching via SiPass software for events triggered on the SISTORE MX, such as: alarm inputs, alarm outputs, recordings, motion detection, etc.

The IVM management system can be connected to SISTORE MX to allow the triggering of events via the IVM on-screen icons: alarm inputs, alarm outputs, recording start, recording stop, etc.

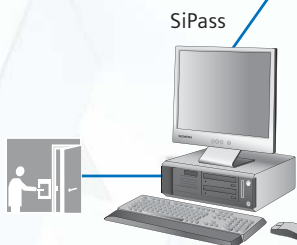
IVM can also switch cameras to analogue monitors simply by dropping camera icons to monitor icons and the picture is displayed.

The SISTORE MX has **32 alarm inputs**, from which recording can be started or speed adjusted. The 8 digital inputs are reserved for specific alarm inputs e.g. UPS power failure, start/stop recording. The 16 alarm outputs are designed to connect to alarm systems, turn on lights or trigger a loudspeaker pre-recording. It is also possible to record a single audio channel linked to a pre-defined camera.

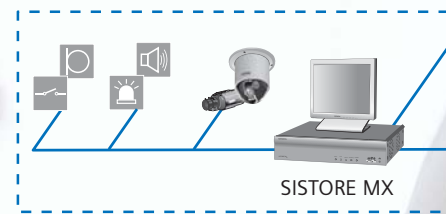
Up to **32 analogue cameras** can be connected to the system; these can be a mixture of colour or mono, indoor or outdoor cameras, pan/tilt/zoom cameras, fixed cameras or speed dome cameras.



**IVM (Interactive Video Software)** for integrated control of video systems. This management system allows the operator to control a security system via the graphic user interface.



**SiPass access control system** to effectively control the access of buildings. Events can be transmitted from SiPass to SISTORE MX and recording can be controlled accordingly.



## Flexible remote viewing

In networked applications during an alarm condition, SISTORE MX can provide a direct link to the remote viewing software, to allow immediate access to the images over the network, or send SMS and if required an e-mail. This included RemoteView software can also perform a "site-tour" – automatically connecting and disconnecting to pre-defined remote sites allowing the operator to simply sit back and watch the tour on the monitor.

## Basic matrix switching

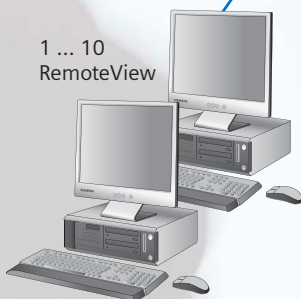
It is possible to have a total of 4 analogue monitor outputs – these can be used to switch

**Up to 4 analogue monitors** can be connected to the SISTORE MX; as well as having the option to display covert or standard cameras, alarm images are also automatically displayed and switched between monitors, enabling flexible viewing of a whole site.



LAN / WAN /  
xDSL / ISDN

1 ... 10  
RemoteView



## Remote operation (RemoteView)

Up to 10 RemoteView clients on a PC may access one SISTORE MX. The "site-tour" function is an automatic, sequential connection to multiple SISTORE MX devices.

any of the 32 analogue cameras, creating a basic 32 x 4 switcher. Monitors can be programmed to act as alarm monitors and SISTORE MX will automatically switch cameras upon alarm activation.

## Reference image

Benefiting both installers and endusers is the facility to store a "reference image" of the installed camera – so should it be moved, maliciously or otherwise, or simply if it has to be serviced, there is an exact record of its viewing position.

## Various display modes

With the connection of up to 48 cameras possible, multiple screen display options are provided to the user to ensure the optimum viewing conditions.

## Motion detection

To optimise hard disk storage, the pixel-based motion detection system allows the user to define areas of interest in a scene and only when motion occurs inside this area, will the images be recorded.

## Covert camera mode

Any camera can be recorded, but not displayed depending upon the user level, so cameras monitoring cash registers could only be monitored by Managers for example.

## Quick and easy searching

To ensure the fastest method of finding images, a mask can be defined in the area of interest, filtering the playback to only that area and ensuring no time is wasted watching hours of useless video. Also, there is the timeline search, showing all recorded images across the cameras, including showing movement detection, alarm triggers etc. – just drag the line to the time or date required – simple.

## Sabotage detection

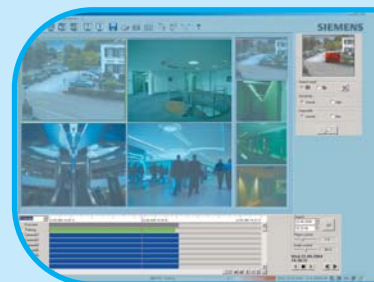
Once set, should the camera be covered, de-focussed, repositioned, or the lens sprayed, then a sabotage alarm with trigger.



Various display modes



Motion detection



Quick and easy searching via timeline or mask

# And here is what the SISTORE MX additionally offers to you



Retail stores



Large offices



Transportation systems



Banks

## High image quality and speed

- The highest image quality via M-JPEG compression
- Program individual recording speed per camera
- Connect up to 16 IP cameras via network for true digital recording, as well as standard analogue cameras via coaxial cable

## Alarming

- Automatic dialup to monitoring station with RemoteView software in case of alarm
- Notification (e.g. alarm, fault) by e-mail or SMS

## Versatile recording settings

- Recording of alarm history, individually programmable for each camera
- Intelligent motion detection, individually programmable for each camera
- Flexible setup via time control for all functions
- AND-link via digital inputs
- Audio recording with allocation to a specific camera
- Reference image stored to check the installed camera position
- Encrypted images for the most secure recording
- Viewing of cameras depending upon user password level (covert camera mode)

## Various playback possibilities

- Playback overview via timeline, log book, date and time, or to enable filtered playback, via search mask (all available with RemoteView software)
- Synchronised playback of up to 4 cameras, including via LAN or ISDN

## Remote operation via RemoteView software

- Simultaneous display of up to 32 live images (Multiplexed) with RemoteView
- Multi-client, up to 10 clients have simultaneous access to one SISTORE MX
- "Site-tour" function, automatically connecting and disconnecting to remote sites
- Multi-server on one client
- License-free RemoteView software included for network operation

## Other innovative functions

- Status indication of the digital outputs, including via RemoteView
- Programmable bandwidth limitation for LAN and ISDN
- 4 USB ports for connection of external devices (e.g. CD/DVD burner etc.)
- SCSI port for connection of Siemens approved RAID systems
- Watchdog, constantly monitoring to ensure the safest system
- Comprehensive user administration functions
- Flexible and simple to use calendar administration to cover holidays etc.

# Technical overview

	MX4 250/50 MX8 250/50 MX16 500/50	MX16 500/100 MX24 500/100 MX32 750/100
--	---	--



## Display

Video inputs (analogue)	4 / 8 / 16	16 / 24 / 32
Video inputs (digital IP / ethernet)	16	16
Monitor outputs	3 (2 x BNC, 1 x VGA)	5 (4 x BNC, 1 x VGA)
Audio inputs	1	1
Display resolution (H x V)	704 x 288 (high) 384 x 288 (standard) 1280 x 1024 (IP megapixel)	704 x 288 (high) 384 x 288 (standard) 1280 x 1024 (IP megapixel)
Live display formats	1 (full screen), 2 x 2 (quad), 1 + 5, 3 x 3, 2 x 8, 4 x 9, 4 x 4, 6 x 6 - 4	1 (full screen), 2 x 2 (quad), 1 + 5, 3 x 3, 2 x 8, 4 x 9, 4 x 4, 6 x 6 - 4
Covert camera mode	■	■

## Recording

Maximum recording speed – no local playback	50 ips - analogue cameras 96 ips - IP cameras	100 ips - analogue cameras 96 ips - IP cameras
Maximum recording speed – during local playback	50 ips - analogue cameras 96 ips - IP cameras	100 ips - analogue cameras 96 ips - IP cameras
Maximum recording speed – playback via RemoteView software	50 ips - analogue cameras 96 ips - IP cameras	100 ips - analogue cameras 96 ips - IP cameras
Recording schedules	user-defined	user-defined

## Alarms

Alarm inputs	16	32
Digital inputs	4	8
Alarm outputs	8	16
Video loss detection	■	■
Activity detection	>25,000 zones	>25,000 zones
Internal buzzer	■	■
Alarm log	■	■
Sabotage detection	■	■

## Controls

Easy-search via mask or timeline	■	■
PTZ / dome control	■	■
Fast forward / rewind controls	x 0.1 to x 50 speed	x 0.1 to x 50 speed
Password protection	9 levels	9 levels

## Connectivity

Ethernet LAN/WAN connector (10/100 Mbps)	■	■
External modem connector (ISDN)	via USB	via USB
RemoteView software (license-free)	■	■
IVM video software interface	■	■
SiPass access control interface	■	■

## Export / Backup

Image export	JPG or AVI over network	JPG or AVI over network
Image backup / archive	USB to CD/DVD burner	USB to CD/DVD burner
Hard disk expansion possibility	■	■

**Siemens Switzerland Ltd**  
Building Technologies Group  
International Headquarters  
Gubelstrasse 22  
CH-6301 Zug  
Phone +41 41 724 24 24  
Fax +41 41 724 35 22  
[www.sbt.siemens.com](http://www.sbt.siemens.com)

## Building Technologies

Subject to change • Order no. A24205-A336-B500 • Ver 2.0  
© Siemens Switzerland Ltd

The information in this document contains general descriptions of the technical options available, which do not always have to be present in individual cases. The required features should therefore be specified in each individual case at the time of closing the contract.